

drum unloader non-stop

for PUR 20 litre blocks in hermetic bags



The '**drum unloader non-stop**' combines the advantage of the drum melter (controlled melting only for the adhesive that you need) with the advantage of continuous work with standard tank reservoir.

It is designed for the use of 20 litre PUR blocks in hermetic plastic bags. A pneumatic cylinder pushes the block against a heated melting grid in order to melt a precise quantity which goes to the tank reservoir filling it up to a prefixed level. When this level is reached, the cylinder and the heating grid are stopped (pushing and heating) while the adhesive in the tank is going out to the application head. When the low level in the tank is reached, the press-melt system is activated again.

This controlled melting system together with a moisture free atmosphere inside the tank guaranteed a perfect conservation of the adhesive and avoids its premature reticulation. When the 20 litre block is finished, an internal signal advises the operator to change it. The new block can be charged without any machine stop.

Gear Pump

This equipment can be supplied with different pump capacities. The gear pump allows an equal and precise glue application by a control of the glue quantity through the gear speed.

Multifunctional electronic control

A touch screen control allows an easy access to all menu levels. This new development combines the electronic '**meler**' control that allows a very user-friendly handling and very effective and intuitive motor control.

Easy Access

The easy access to all the components of the '**drum unloader non-stop**' is a big advantage. It allows a fast access to all internal components of the system (motor, controls etc.) by means of dismantlable protection panels and an electronic cabinet mounted on a sliding rail.

Connections

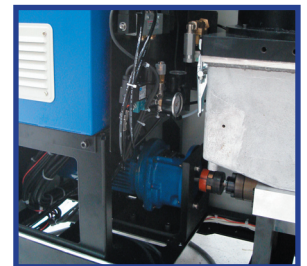
The hose connections of the '**drum unloader non-stop**' units can be installed at the rear or on one side of the system, close to the main machine (2 pumps maximum) or on the rear side of the equipment, depending on the needs of the installation. Two hoses per pump and manifold can be installed.

Motor-pump

The assembly of motor-gearbox-pump guarantees an equal hot-melt supply, which is controlled by the motor rotation speed. A large number of pump sizes and simple and double pumps are available (1 to 8cc in simple pumps and 0,6x2 to 4,8x2 cc in double pumps).

Compatibility

The '**drum unloader non-stop**' can be equipped with Pt100 as well as with Ni120 sensor technology. Therefore it is compatible with most of the common hot melt systems in the market.

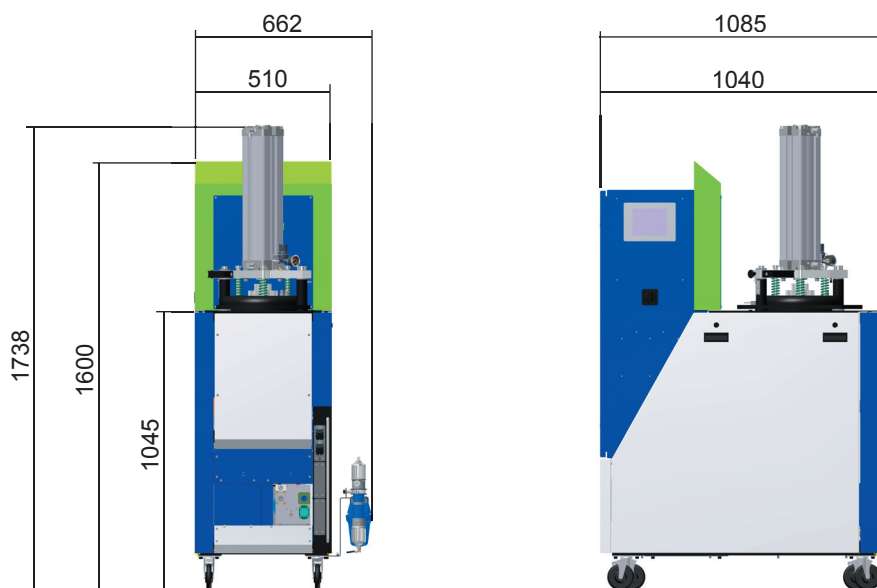




TECHNICAL CHARACTERISTICS

Main tank volume	Ø286 x 395 (20L blocks)
Melting tank (reservoir) volume	3.5L (used) / 10L (máx.)
Pumping ratio	1, 4 y 8 cc/rev single pump (*) 0.6x2, 1.2x2, 2.4x2, 4.8x2 cc/rev double pump (*)
Melting ratio	20 L/h (*)
Number of pumps	1 pump single or double
Hydraulic outputs	2 per pump
Electrical connections	up to 4 outputs
Motor power	375 W
Speed	0-100 rpm (10-80 rpm recommended)
Range of temperatures	40 to 200°C
Temperature control	RTD ±0,5°C
Max. working pressure	90 bar (1.305 psi)
By-pass valve	pneumatic or mechanical adjustment
Max. power to install (for 230 VAC)	12.635 W (1 single pump/2 outputs)
External functions	Temperatures ok output Finished block signal Reservoir low level signal Standby external control input Motor start/stop external signal Motor speed external control
Electrical requirements	230V 3~ 50 Hz + PE 400V 3~ 50 Hz + N + PE
Options	Pneumatic by-pass valve Four colors light tower

* Depends on adhesive type and working conditions



www.meler.es



meler 

MELER GROUP
Corporate Headquarters
E-mail: info@meler.es

P.I. Los Agustinos, Calle-G, Nave-D-43
E-31.160 ORCOYEN. Navarra (Spain)
Tel.: +34 948 351 110 - Fax.: +34 948 351 130

